



**Badger Meter, Inc.**

**How to Read Badger's Recordall®  
Water Meter Registers**

## **How to Read Badger's Recordall Water Meter Registers**

The standard local or encoder (RTR®) register consists of a straight-reading odometer-type totalization display, 360° test circle with center sweep hand and flow finder to detect leaks. Flow finders are color coded to define the unit of measure.

**Red = Gallons, Blue = Cubic Feet, & Black = Cubic Meters.**

The test circle is divided into tenths and hundredths, and it takes a complete revolution of the sweep hand or pointer to indicate the first rolling digit at the right of the number wheel stack. The test circle is only used for testing purposes. The test circle will vary depending on meter size.

On all registers there only six live number wheels; the rest of the numbers are painted on the dial. Number wheel colors will be determined by the units of measure (i.e. gallons, cubic feet, and cubic meters) and by test circle size.

The following will display the various test circles, meter sizes, units of measure and the standard utility meter reading.

**Badger Meter - World Class Water Meters & Reading  
Technologies**

## **How to Read Badger's Recordall Water Meter Registers**

### **Utility & Billing Standards for Meter Reading**

<b>Unit of Measure</b>	<b>Reading to the Nearest</b>
<b>Gallons</b>	<b>1,000</b>
<b>Cubic Feet</b>	<b>100</b>
<b>Cubic Meters</b>	<b>10</b>

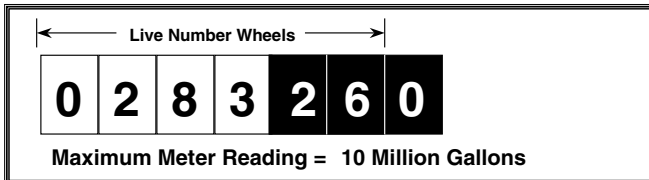
**All registers are designed with white and black number wheels for readability. The white number wheels correspond to the “typical” utility standard meter reading.**

**Badger Meter - World Class Water Meters & Reading Technologies**

## How to Read Badger's Recordall Water Meter Registers

10 Gallon Test Circle

Recordall Disc M25, M35, M40, & M70.



Meter reading 1 Gallon = 283260  
to the nearest? 10 Gallons = 28326

100 Gallons = 2832  
1,000 Gallons = 283

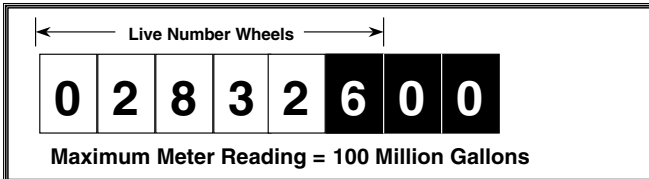
← Utility  
Standard



## How to Read Badger's Recordall Water Meter Registers

100 Gallon Test Circle

Recordall Disc M70, M120, & M170 and Local T-II 2", 3" and 4"



Meter reading 1 Gallon = 2832600

to the nearest? 10 Gallons = 283260

100 Gallons = 28326

1,000 Gallons = 2832

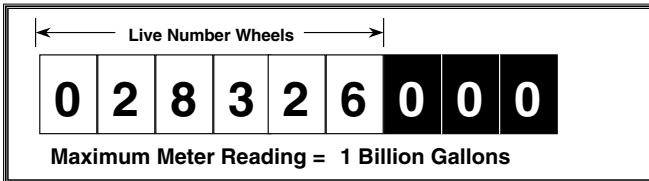
← Utility  
Standard



## How to Read Badger's Recordall Water Meter Registers

1,000 Gallon Test Circle

Turbo II 2", 3", 4", 6", 8", & 10" (local only).



Meter reading 1 Gallon = 28326000

to the nearest? 10 Gallons = 2832600

100 Gallons = 283260

1,000 Gallons = 28326

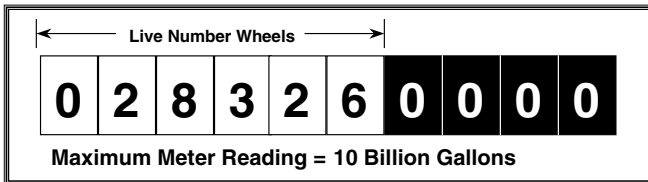
Utility  
Standard



## How to Read Badger's Recordall Water Meter Registers

10,000 Gallon Test Circle

Turbo II 12", 16", & 20" and RTR T-II 10"



Meter reading 10 Gallons = 28326000

to the nearest? 100 Gallons = 2832600

1,000 Gallons = 283260

10,000 Gallons = 28326 ←

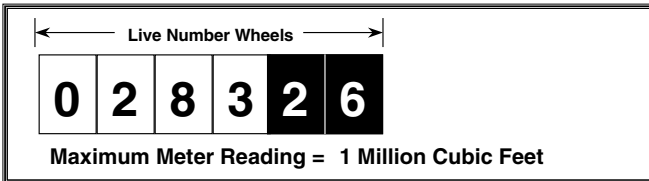
Utility  
Standard



## How to Read Badger's Recordall Water Meter Registers

1 Cubic Foot Test Circle

Recordall Disc M25, M35, M40, & M70.



Meter reading 1 Cubic Foot = 28326

to the nearest? 10 Cubic Feet = 2832

100 Cubic Feet = 283

← Utility  
Standard

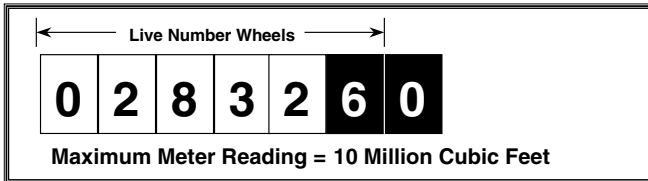




## How to Read Badger's Recordall Water Meter Registers

10 Cubic Foot Test Circle

Recordall Disc M70, M120, & M170 and local T-II 2", 3" and 4"



Meter reading 1 Cubic Foot = 283260

to the nearest? 10 Cubic Feet = 28326

100 Cubic Feet = 2832

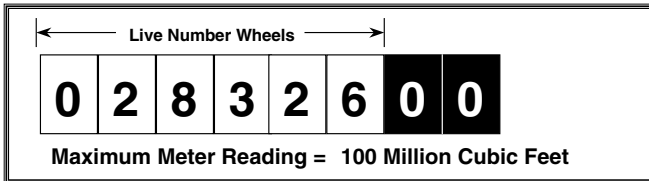
Utility  
Standard



## How to Read Badger's Recordall Water Meter Registers

100 Cubic Foot Test Circle

RTR, Turbo II 2", 3", 4", 6", 8", & 10" (local only).



Meter reading 1 Cubic Foot = 2832600

to the nearest? 10 Cubic Feet = 283260

100 Cubic Feet = 28326

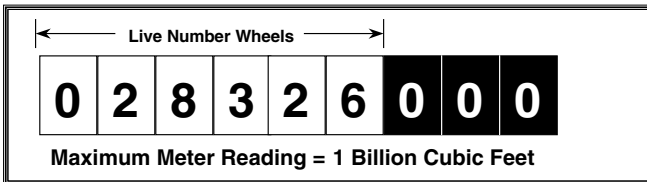
Utility  
Standard ←



## How to Read Badger's Recordall Water Meter Registers

1,000 Cubic Foot Test Circle

Turbo II 12", 16", & 20" and RTR T-II 10"



Meter reading 10 Cubic Feet = 2832600

to the nearest? 100 Cubic Feet = 283260

1,000 Cubic Feet = 28326 ←

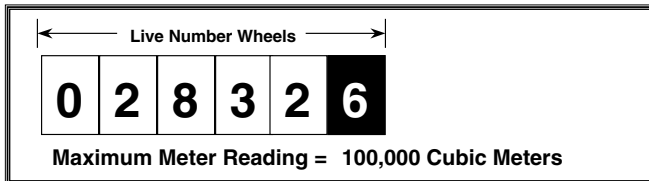
Utility  
Standard



## How to Read Badger's Recordall Water Meter Registers

.1 Cubic Meter Test Circle

Recordall Disc M25, M35, M40, & M70.



Meter reading 1 Cubic Meters = 2832  
to the nearest? 10 Cubic Meters = 283

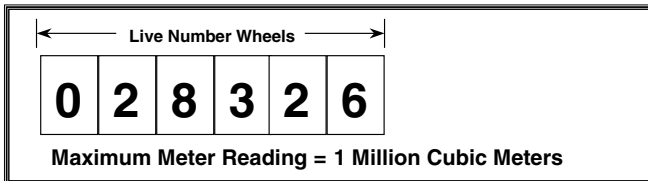
Utility  
Standard ←



## How to Read Badger's Recordall Water Meter Registers

1 Cubic Meter Test Circle

Recordall Disc M70, M120, & M170. Turbo II 2", 3", & 4".



Meter reading 1 Cubic Meters = 28326  
to the nearest? 10 Cubic Meters = 2832

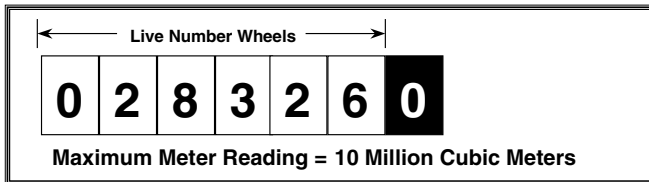
Utility  
Standard ←



## How to Read Badger's Recordall Water Meter Registers

10 Cubic Meter Test Circle

Turbo II 6", & 8", 10", 12", 16" and 20"



Meter reading 1 Cubic Meters = 283260  
to the nearest? 10 Cubic Meters = 28326 ← Utility Standard  
100 Cubic Meters = 2832

